



Budapest • Kraków • Bucharest

abplus
events

Next editions of GIS:

GIS

Kraków, 2016
February 23

GIS

Bucharest 2016
March 22-23

GIS

Budapest 2016
November 24

Trade Events for Architects and Contractors organized by ABplus Events

ARCHITECTURE **INGLASS**
EXPO CONFERENCE Glass Architecture and Engineering

www.ieglass.eu

Architecture **LAUD**
Expo Conference landscape architecture | urban infrastructure

www.ielaud.eu

ARCHITECTURE **RIFF**
EXPO CONFERENCE roofs | façades | floors | insulations

www.ieriff.eu

ARCHITECTURE **GIS**
EXPO CONFERENCE interior architecture | design | lighting

www.iegis.eu

 **CONTRACTOR**
ENGINEERING & CONSTRUCTION CONTRACTING CONFERENCE

event organized
under aegis of **CAMEX**

www.constructii.contractor.com.ro

 **CONTRACTOR**
INSTALLATION ENTREPRENEURS EXPO CONFERENCE

event organized
under aegis of **CAMEX**

www.instalatii.contractor.com.ro

Message of the General Manager of ABplus Events



**“We value Design. Design is about creating places that enhance the human experience.
Before we imagine, we interact.”**

GIS International Architecture Expo Conference presents best practice examples, widely imaginative projects from the following domains: education & culture, healthcare architecture, hospitality architecture, office & public buildings.

The series of the international GIS expo conferences organized in 2016 in Hungary, Poland and Romania is addressed to architects, interior designers, lighting designers, contractors, investors and companies from the industry.

GIS 2016 editions highlight the design of buildings that generate new thinking in social, cultural, learning & working environments.

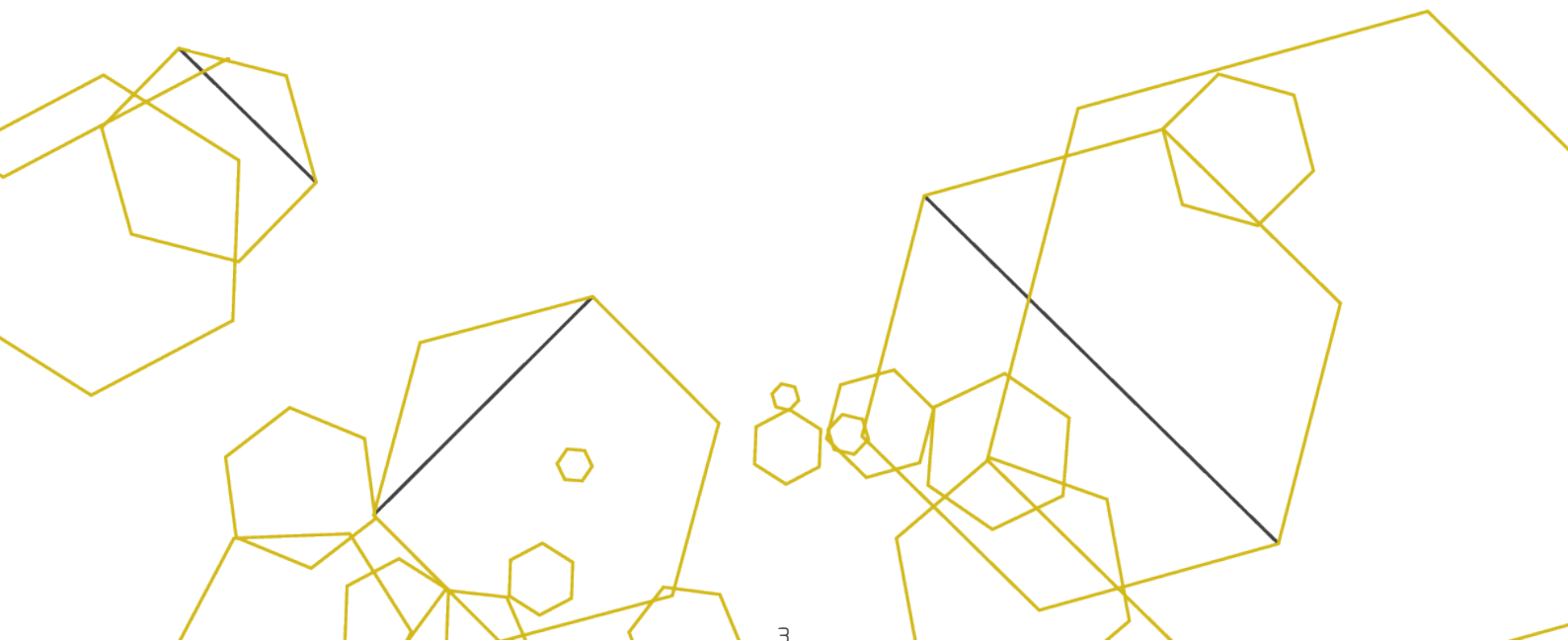
We believe in a sense of place and the development of sustainable communities, an approach to design that considers and responds carefully to local cultures, lifestyle patterns and architectural languages both internationally and nationally.

Designers and architects never lose sight of the people who use their buildings, the communities they serve and the legacy they leave. Design and sustainability are inseparable and as such the focus is on reducing the gap between design and real life performance.”

The guest speakers in the program of our GIS international expo conferences are the industry's most

Florin Mindirigiu

Co-Founder and CEO ABplus Events



Testimonials



“GIS International Interior Architecture and Design Expo Conference is the right place to meet architecture and design community to celebrate learn, exchange and be inspired! At GIS we have very interesting talks about Architecture and Interior Design and start to see where we're going to be in the future. It's that dialogue face to face, with people that are doing amazing things that makes GIS one of the most important events that happens in architecture each year.

It has been amazing to be part of the GIS Conference and look across the range and quality of projects put forward for this event. GIS is part of my heart since the Bucharest and Warsaw edition and I really believe that this amazing experience in Budapest will blow your mind.

arch. Nini ANDRADE SILVA

President & Founder, Atelier Nini Andrade Silva, PORTUGAL
Special Guest GIS Budapest 2016 edition



“On behalf of the Association of Polish Architects SARP, partner of GIS expo conference, I have the honour and great pleasure to welcome you, and our guests, architects, interior architects and designers, who represent well-known European architectural studios, among the winners of competitions and awards and the authors of outstanding works in the field of interior design.

I hope that unlimited imagination combined with technological progress will offer great opportunities to all interior architects to create user-friendly spaces, which respond to the client's needs.”

arch. Mariusz ŚCISŁO

President of THE ASSOCIATION OF THE POLISH ARCHITECTS SARP
Chairman GIS Warsaw 2014



“It was a very good combination of fresh designers who are somewhere at the beginning or in full swing of their career and who allow us, in fact, to anticipate the future. What pleased me very much was that the public had the opportunity to see what it means to put in the effort to produce quality interiors, as the speakers presented their projects behind the scenes, where we saw huge labour, which one must be both driven and subtle to understand when decoding the result.

Another thing that I find important is that this conference highlights the exceptions and things that can be inspiring, models to follow. The world does not know them, does not see them and this justifies the public's appetite for this conference. A great benefit is also its educational role.”

arch. Șerban ȚIGĂNAȘ

President of THE ORDER OF THE ARCHITECTS OF ROMANIA
Co-organizer of the Romanian editions of GIS



“ The series of GIS events was extraordinary, with an incredible number of very very interesting people, architects, interior designers. The event has allowed me to meet new people and has offered me the opportunity to meet people that I normally wouldn't have had the chance to meet and network with, this is what I think is really important. In Los Angeles we have a really rare opportunity to do this and as it is so far away, allowing me to come to this was absolutely extraordinary, this is something I wouldn't have been able to do. I found the event to be fantastic and since my return to Los Angeles I have been telling everybody about it and I really recommend to other architects from the United States of America to participate.”

arch. Hagy BELZBERG FAIA

Hagy Belzberg Architects, U.S.A.
Special Guest GIS Bucharest 2015



“ It is always great when a lot of people from different countries meet, GIS gave us the great opportunity to have inside-outside debates & presentations. It is always nice to meet people and I am glad I have participated at the GIS expo conference.”

arch. Fokke MOEREL

MVRDV, The Netherlands
Keynote Speaker GIS Bucharest 2015



“ GIS 2012 was an excellently run conference with a number of great speakers with interesting and educational content.”

arch. Kevin THEOBALD

President International Association of Lighting Designers, UK
Special Guest GIS Bucharest 2012

Testimonials



“ I think GIS is a fantastic event and amazing opportunity. It is so important to bring together people with this inspiration and connect them. Everybody presents his point of view and that is why the event is very inspiring and I really can recommend it, absolutely.”

arch. Johannes BAAR-BAARENFELS

BAAR-BAARENFELS ARCHITEKTEN, Austria
Guest Speaker GIS Warsaw 2015 & GIS Bucharest 2011



“ It was great that I was part of this great influential and inspirational talks, the most exciting part was that there were designers all over the world and what was really nice is that, whatever the country they were coming from was, they all came to a single conclusion. I once more came to the idea that design is an international language and I am very hopeful about the future now.”

arch. Zeynep Esra AKTEN

AUTOBAN, Turkey
Guest Speaker GIS Bucharest 2015



“ It was very stimulating to engage with other architects and to learn what they have been doing. I think this type of events enhance possible future collaborations between the different studios, generating global multifunctional teams.”

arch. Diogo AGUIAR

LIKE Architects, Portugal
Guest Speaker GIS Bucharest 2015

GIS

International Architecture Expo Conference

is an European project presenting the most recent interior architecture and design projects in the following fields: EDUCATION & CULTURE, OFFICE & PUBLIC BUILDINGS, HOSPITALITY ARCHITECTURE, HEALTHCARE ARCHITECTURE.

The event is addressed to architects, designers, lighting designers, beneficiaries of projects and companies with solutions for architecture.

Special Guests:

- 2016:** Nini Andrade SILVA,
ATELIER NINI ANDRADE SILVA, Portugal
Rainer MAHLAMÄKI,
LAHDELMA & MAHLAMÄKI ARCHITECTS, Finland
- 2015:** arch. Hagy BELZBERG FAIA
HAGY BELZBERG ARCHITECTS, U.S.A.
- 2014:** arch. David Kohn
DAVID KOHN ARCHITECTS, The UK
- 2013:** arch. Giorgio Borruso
BORRUSO DESIGN, The USA
- 2012:** arch. Nini Andrade Silva
NINI ANDRADE SILVA, Portugal
- 2011:** arch. Alan Leo Plestina
UPI-2M, Croatia



Facts & Figures:

250

participants in
every edition / per day

50

countries represented
in the latest editions

Event structure:

- ✓ Conference: official plenary sessions, thematic plenary sessions, thematic sections
- ✓ Masterclasses
- ✓ Exhibition: thematic sections on interiors
- ✓ Business networking areas: coffee-break area, lunch area, speakers lounge



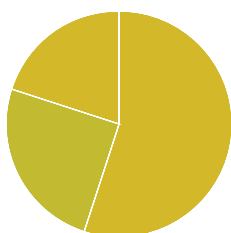
Opportunities within GIS:

- ✓ multiple networking and business matchmaking opportunities among the most influential architecture offices in Romania, Poland and Hungary
- ✓ direct access to future architectural projects
- ✓ direct access through the communication campaign with three important communities of architects: Romanian, Polish, Hungarian over 18.000 architects; 250 architects participating on average in every event



WE KNOW OUR AUDIENCE

Speakers



90%

of the participants are active architects,
members of professional organisations from
Hungary, Poland and Romania

55%

international highly-awarded
speakers in renowned competitions
such as:

- ✓ Mies van der Rohe Award for Contemporary Architecture
- ✓ World Interior of the Year at the INSIDE World Festival of Interiors
- ✓ World Architecture Festival Awards
- ✓ International Hotel Awards

- ✓ International Hotel & Property Awards
- ✓ Sleep European Hotel Design Awards
- ✓ Restaurant and Bar Design Awards
- ✓ Conde Nast Johansens Awards for Excellence
- ✓ Lighting Design Awards
- ✓ International Design & Architecture Awards
- ✓ International Interior Design Association Awards
- ✓ Interior Design Best of Year Award

- ✓ Red Dot Design Award
- ✓ Best Interior Design Europe
- ✓ Aga Khan Award
- ✓ LEAF Interior Design Awards
- ✓ FX International Design Award

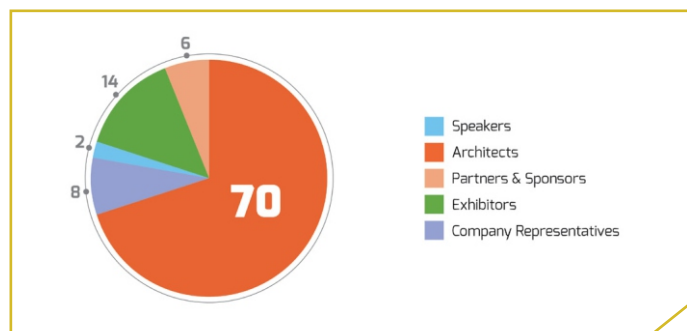
25 %

local architects and designers

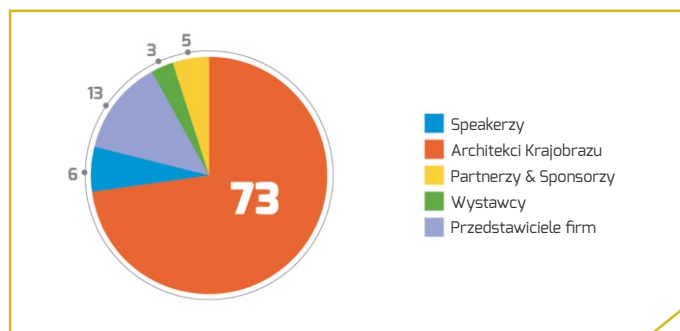
20 %

Partners, sponsors,
companies

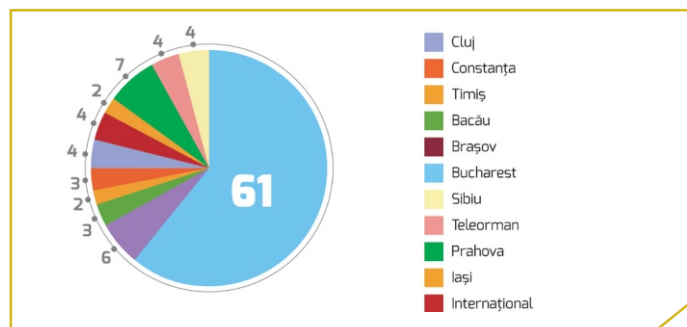
Structure of participants in the latest edition of GIS Bucharest



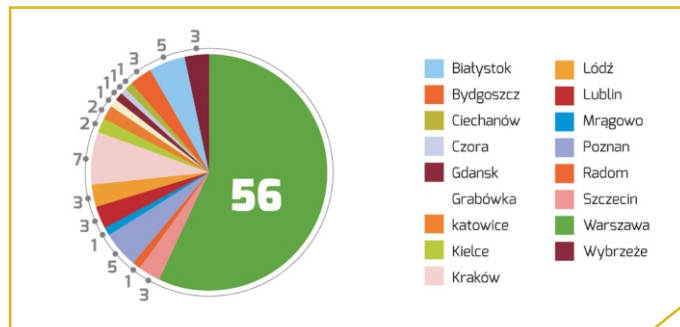
Structure of participants in the latest event in Warsaw



Geographical distribution of architects at the latest edition of GIS Bucharest



Geographical distribution of architects at the latest event in Warsaw



GIS 2016 & 2015 highly-awarded speakers



**Nini
ANDRADE SILVA**
SPECIAL GUEST GIS BUDAPEST 2016,
ATELIER NINI ANDRADE SILVA, PORTUGAL



**Rainer
MAHLAMÄKI**
SPECIAL GUEST GIS BUCHAREST 2016,
LAHDELMA & MAHLAMÄKI ARCHITECTS,
FINLAND



**Ryszard
GRUDA**
PRESIDENT NATIONAL CHAMBER
OF POLISH ARCHITECTS (IARP)



**Borys
CZARAKCZIEW**
CHAIRMAN GIS 2015 KRAKÓW,
NATIONAL CHAMBER OF
POLISH ARCHITECTS (IARP)



**Bohdan
LISOWSKI**
PRESIDENT OF THE BOARD,
ASSOCIATION OF POLISH ARCHITECTS
KRAKÓW BRANCH



**Claudio
NARDI**
CLAUDIO NARDI ARCHITECTS, ITALY



**Bolestaw
STEMMACH**
STEMMACH I PARTNERZY BIURO
ARCHITEKTONICZNE SP. Z O. O., POLAND



**Dean
LAH**
ENOTA, SLOVENIA



**Romuald
LOEGLER**
ATELIER LOEGLER SP. Z O.O., POLAND



**Tomasz
KONIOR**
KONIOR STUDIO, POLAND

GIS 2016 & 2015 highly-awarded speakers



**Makoto
NAKAYAMA**
NAKAYAMA ARCHITECTS, JAPAN



**Lukasz
PLATKOWSKI**
GENSLER, UK



**Colin
BALL**
BDP-Building Design Partnership Ltd, UK



**Krzysztof
INGARDEN**
INGARDEN & EWY ARCHITECTS, POLAND



**Neil
KNOWLES**
ELEKTRA LIGHTING DESIGN, UK



**Carlo
BERARDUCCI**
BERARDUCCI ARCHITECTURE, ITALY



**Claudia
STAUBMANN**
COCO ARCHITECTURE, FRANCE



**Cédric
RAMIÈRE**
COCO ARCHITECTURE, FRANCE



**Hagy
BELZBERG FAIA**
HAGY BELZBERG ARCHITECTS, U.S.A.



**Nunthanut
AMORNPUN**
HYPOTHESIS DESIGN AGENCY, THAILAND

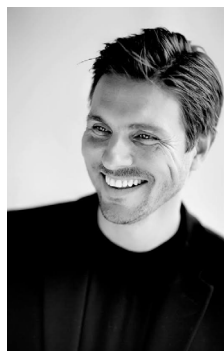
GIS 2016 & 2015

highly-awarded speakers



**Zeynep Esra
AKTEN**

AUTOBAN, TURKEY



**Martin
GRAN**

SNØHETTA, NORWAY



**arch. Mariusz
ŚCISŁO**

ASSOCIATION OF POLISH ARCHITECTS
SARP, POLAND



**arch. Paweł
KOBYLAŃSKI**

ASSOCIATION OF POLISH ARCHITECTS
- SARP, POLAND



**arch. Cristian
Santandreu UTERMARK**

AZARQUITECTOS, SPAIN



**arch. Johannes
BAAR-BAARENFELS**

BAAR-BAARENFELS ARCHITEKTEN, AUSTRIA



**Anda
MANU**

AMA DESIGN, ROMANIA



**Erik
NISSEN JOHANSEN**

STYLT TRAMPOLI, SWEDEN

GIS 2016 & 2015 highly-awarded speakers



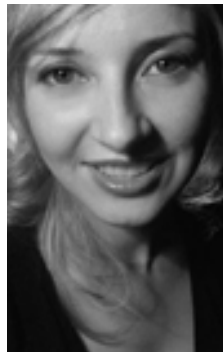
**arch. Ian
MACREADY**
VW+BS Studio, Great Britain



**Piotr
WELNIAK**
ETTE PIOTR WELNIAK, POLAND



**Tomasz
WOJTKOWIAK**
TOYA DESIGN, POLAND



**Daria
KIEŻUŃ**
ACADEMY OF FINE ARTS,
WROCLAW, POLAND



**arch. Seyhan
ÖZDEMİR**
Autoban, Turkey



**arch. Fokke
MOEREL**
MVRDV, THE NETHERLANDS



**arch. Francesco
ISIDORI**
Labics, Italy



**arch. Herbert
LUI**
Dexter Moren Associates, Great Britain

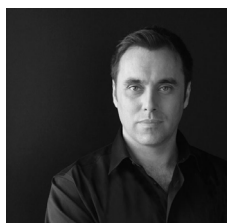
GIS - past editions

Keynote speakers



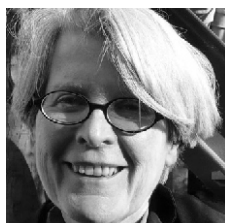
**arch. David
KOHN**

DAVID KOHN ARCHITECTS,
UK



**arch. Giorgio
BORRUSO**

GIORGIO BORRUSO DESIGN,
THE UNITED STATES



**arch. Joke VAN
HENGSTUM**

EUROPEAN COUNCIL OF
INTERIOR ARCHITECTS,
THE NETHERLANDS



**dr. Özgen Osman
DEMİRBAŞ**

INT. FED. OF INTERIOR
ARCHITECTS/DESIGNERS,
TURKEY



**arch. Kevin
THEOBALD**

INTERNATIONAL
ASSOCIATION OF LIGHTING
DESIGNERS, UK



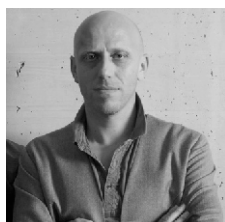
**Peter
BIERWIRTH**

EUROPEAN HOTEL
MANAGERS ASSOCIATION,
GERMANY



**arch. Sergei
TCHOBAN**

NPS TCHOBAN VOSS,
GERMANY/SPEECH
TCHOBAN&KUZNETSOV,
RUSSIA



**arch. Martin
LESJAK**

INNOCAD,
AUSTRIA



**Joost
ECTOR**

ECTOR HOOGSTAD
ARCHITECTS,
THE NETHERLANDS



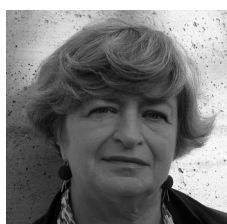
**arch. David
ARCHER**

ARCHER HUMPHRYES
ARCHITECTS,
UK



**Peter
FORDHAM**

MORGAN SINDALL
PROFESSIONAL SERVICES,
THE GREAT BRITAIN



**arch. Zsuzsanna
SNOPPER**

CHAMBER OF HUNGARIAN
ARCHITECTS,
HUNGARY



**David
ATKINSON**

DAVID ATKINSON LIGHTING
DESIGN LIMITED,
UK



**Svetlana
CHERNYSHEVA**

DESIGNPORTRAIT,
RUSSIA



**dipl. ing. Judy
HANEL**

DREIMETA,
AUSTRIA



**arch. John
SMALL**

STEELCASE EMEA,
THE GREAT BRITAIN



**arch. Davor
KATUSIC**

PRODUKCIJA 004 D.O.O.,
CROATIA



**arch. Barry
HANNAFORD**

DPA LIGHTING
CONSULTANTS FZ LLC / 12
VOLTS DC, UK



**arch. Can
ELMAS**

AKYÜREK ELMAS
MIMARLIK,
TURKEY



**arch. Johann
MOSER**

BWM ARCHITEKTEN UND
PARTNER,
AUSTRIA

One day programme

FULL DAY CONFERENCE



08:00 - 09:00
Registration of participants
Welcome coffee

Exhibition Visit

Organized visits for architects: 250
 Matchmaking
 Activities in the Business Networking areas



09:00 09:20
OFFICIAL OPENING CEREMONY

Audience: approx. 250 architects

Message of the organizers
 Message of the President: MEK, IARP, OAR
 Message of the Official Partner



09:20 11:00
OFFICIAL PLENARY SESSION

Audience: approx. 250 architects

Presentation of guest architects 20 minutes each
 Presentation of the Official Partner 20 minutes
 Presentation of the Main Partner 15 minutes

Q & A session 5 minutes



11:00 11:30
Networking coffee-break

Exhibition Visit

Organized visits for architects: 250
 Matchmaking
 Activities in the Business Networking areas



11:30 13:10
THEMATIC PLENARY SESSION 1

Audience: approx. 125 architects

Presentations of guest architects 20 minutes each
 Presentations of Sponsors 10 minutes each
 Presentations of Companies 10 minutes each

Q & A session 5 minutes



13:10 14:10
Networking lunch

Exhibition Visit

Organized visits for architects: 250
 Matchmaking
 Activities in the Business Networking areas



14:10 15:50
THEMATIC PLENARY SESSION 2

Audience: approx. 125 architects

Presentations of guest architects 20 minutes each
 Presentations of Sponsors 10 minutes each
 Presentations of Companies 10 minutes each

Q & A session 5 minutes



15:50 16:20
Networking coffee-break

Exhibition Visit

Organized visits for architects: 250
 Matchmaking
 Activities in the Business Networking areas



16:20 18:00
OFFICIAL PLENARY SESSION

Audience: approx. 250 architects
 Special guest presentation 30 min
 Presentations of guest architects 20 minutes each
 Presentation of the Main Partner 15 minutes each

Q & A session 5 minutes

Conclusions



SIMULTANEOUS THEMATIC SECTIONS - 1 hour each

Audience: approx 25 architects

Presentation of the guest architect 40 minutes
 Presentation of the guest company 20 minute

One day program

FULL DAY EXHIBITION

Book your space in the business networking area of the event!

Visiting program: 08:00 - 18:00

Approx. 250 specialist visitors / day

- ✓ architects ✓ interior architects ✓ designers
- ✓ lighting specialists ✓ speakers ✓ special guests
- ✓ top management of companies in the industry



GIS Domains

General thematic categories:


Architecture
Interior Architecture
Interior Design

Product Design
Furniture
Lighting

Subcategories:

 **Building & Construction**
Building materials
Insulation
Architectural software

 **Kitchen & Bathrooms**
Kitchen
Bathroom
Home appliances

 **Interior fittings**
Partitions, Ceilings, Raised floors
Staircases, Elevators
Windows, Shutters, Blinds
Doors

 **Lighting**
Floor & Table lamps
Wall & Ceiling lamps
Architectural lighting
Interior lighting


 **Flooring & Wallcovering**
Paint, Decorative plaster
Wallpaper, Decorative panel
Wooden flooring
Tile, Mosaic, Paver
Carpet, Resilient flooring


 **Smart buildings, Access control**
Home and building automation
Access control and security

 **Furniture & Decoration**
Sofas, Benches
Armchairs, Chairs
Tables, Coffee tables
Beds, Bed-side tables
Storage, Shelving
Children's furniture
Interior accessories
Textiles

 **Healthcare equipment and solutions**

 **Safety & Emergency equipment**

 **HVAC technology**
Heating & ventilation technology
Air conditioning and refrigeration technology

 **Insulation solutions**
Heat and sound insulation
Vibration isolation
Anti-radiation protection

Applications in the projects:

Offices
Hotels
Sport and wellness
Public Buildings
Retail

Residential
Restaurants
Bars
Pubs
Healthcare projects

Type of Package

Included Services

	OFFICIAL PARTNER	MAIN PARTNER	SPONSOR	COMPANY PRESENTATION	EXHIBITION STAND	PROMOTION PACKAGE
✓ Direct association with a unique thematic event, dedicated to architects, designers, lighting specialists	●	●	●			
✓ Exclusivity within the event, a unique position on all the materials, print and online	●					
✓ Message in the official opening of the event	●					
✓ 20 minutes presentation in the official plenary session - the first presentation (200-250 architects in the auditorium)	●					
✓ Preferential position in the program of the conference	●					
✓ Nomination in the official plenary sessions, with the name and title held within the event	●	●				
✓ Presentation of 15 minutes in the official plenary session (200-250 architects in the auditorium)		●				
✓ Presentation of 10 minutes in a thematic plenary session (80-100 architects in the auditorium)			●			
✓ Speaker in the program and in the communication campaign	●	●	●	●		
✓ Full list of participants in the event	●	●				
✓ The list of participants in the session/section in which the presentation takes place	●	●	●	●		
✓ Personalised newsletter sent to an international database of over 20000 contacts: architects, contractors, top management, companies in the industry	●	●				
✓ Personalised newsletter sent to a national database of over 35000 contacts: architects, contractors, top management, companies in the industry	●	●				
✓ Media exposure with the title held within the event	●	●	●			
✓ Presentation of 10 minutes in a thematic section (25 architects in the auditorium)				●		
✓ The presence of the company with the logo and the title held within the event on all presentation materials: program, brochure or CD, badges, electronic background, roll-up, spider/ background, portfolio, newsletters, newsalerts, website	●	●	●			
✓ Participant in the conference: full package	●	●	●	●		
✓ Full access to the speaker's lounge	●	●	●	●		
✓ Full acces to the networking area of the event	●	●	●	●	●	
✓ Insert of a presentation material in the event portfolio	●	●	●	●	●	●
✓ Exhibition stand – module of 4 sqm, 2x2 m		●			●	
✓ Exhibition stand of 6 sqm - module of 6 sqm, 2x3 m	●					
✓ Roll-up display in the thematic section				●		
✓ Roll-up display in the plenary thematic section	●		●			
✓ Roll-up display in the official plenary session	●	●				

Thank you to our partners!

INSTITUTIONAL PARTNERS:



OFFICIAL PARTNER:



MAIN PARTNERS:



PARTNERS:



GIS in pictures



GIS





GIS in pictures








Check out our community portal
and see our latest news on
trade events for architects and contractors!

 <http://share-architects.com>

 share@abplusevents.com

 RO: +4-0745.573.732
 PL: +4-0332.413.893, +4-0332.413.891
 EN: +4-0745.573.731, +4-0745.573.730

 www.iegis.eu

abplus
events